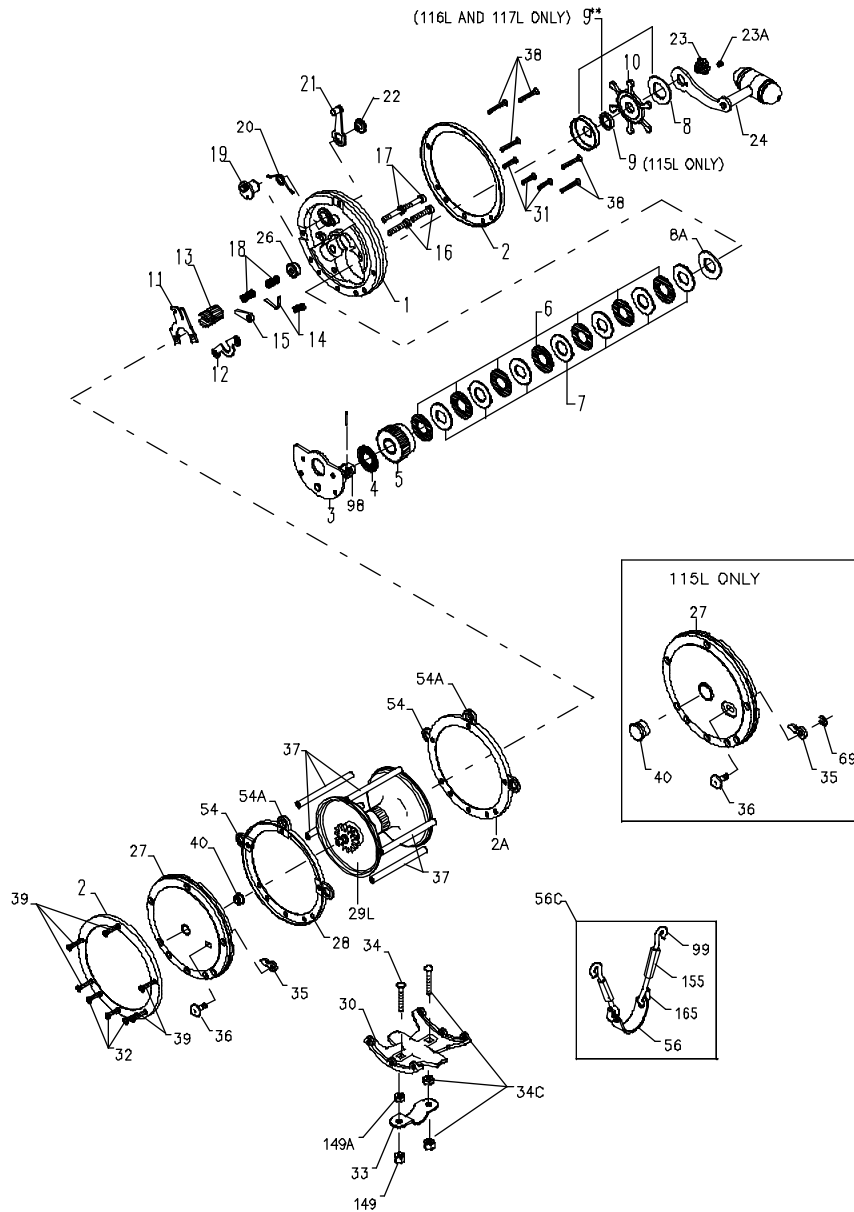




PARTS LIST FOR MODELS 115L, 116L AND 117L



| KEY NO. | 115L PART NO. | 116L PART NO. | 117L PART NO. | DESCRIPTION |
|---------|--------------------|--------------------|--------------------|-----------------------------|
| 1 | 001 115 | 001 116 | 001 117 | Right Side Plate |
| 2 | 002 115-O (2 req.) | 002 116-O (2 req.) | 002 117-O (2 req.) | Outer Right Side Ring |
| 2A | 002 115-I | 002 116-I | 002 117-I | Inner Right Side Ring |
| 3 | 003 115 | 003 116 | 003 117 | Bridge w/Sleeve |
| 4 | 004 115 | 004 116 | 004 117 | Fiber Washer |
| 5 | 005 115 | 005 116 | 005 117 | Main Gear |
| 6 | 006 115 (5 req.) | 006 116 (7 req.) | 006 117 (7 req.) | Drag Washer |
| 7C | 007C115 | 007C116 | 007C117 | Metal Drag Washer Set |
| 8 | 008 114 | 008 116 | 008 117 | Tension Spring |
| 8A | 008 115 | | | Tension Spring |
| 9 | 009 114 | 009 116** | 009 117** | Spacing Sleeve (Set of 3) |
| 10 | 010 114 | 010 116 | 010 117 | Star Drag Wheel |
| 11 | 011 114 | 011 116 | 011 116 | Eccentric Jack |
| 12 | 012 114 | 012 116 | 012 116 | Pinion Yoke |
| 13 | 013 114 | 013 116 | 013 117 | Pinion |
| 14 | 014 116 | 014 116 | 014 117 | Dog Spring |
| 15 | 015 115 | 015 116 | 015 117 | Dog |
| 16 | 016 114 (2 req.) | 016 114 (2 req.) | 016 114 (2 req.) | Lower Bridge Screw |
| 17 | 017 114 (2 req.) | 017 114 (2 req.) | 017 114 (2 req.) | Upper Bridge Screw |
| 18 | 018 114 (2 req.) | 018 114 (2 req.) | 018 114 (2 req.) | Clutch Springs |
| 19 | 019 115 | 019 115 | 019 115 | Eccentric |
| 20 | 020 114 | 020 114 | 020 114 | Eccentric Spring |
| 21 | 021 114 | 021 116 | 021 117 | Eccentric Lever |
| 22 | 023 060 | 023 060 | 023 060 | Eccentric Screw |
| 23 | 023 116 | 023 116 | 023 116 | Handle Screw |
| 23A | 110 060 | 110 060 | 110 060 | Handle Lock Screw |
| 24 | 024 115 | 024 116 | 024 117 | Handle |
| 26 | 026 116 | 026 116 | 026 117 | Right Side Bearing |
| 27 | 027 115 | 027 116 | 027 117 | Left Side Plate |
| 28 | 028 115-I | 028 116-I | 002 117-I | Inner Left Side Ring |
| 29L | 029L115 | 029L116 | 029L117 | Spool |
| 30 | 030 115 | 030 116 | 030 117 | Stand |
| 31 | 039 012 | 039 012 | 039 012 | Right Side Stand Screw |
| 32 | 032 021 | 032 021 | 039 012 | Left Side Stand Screw |
| 33 | 033 340 | 033 116 | 033 117 | Rod Clamp |
| | *033R114 | *033 130ST | *033R117 | Ringed Rod Clamp (Optional) |
| 34 | 034 045 | 034 116 | 034 116 | Clamp Screw |
| 34C | 034C045 | 034C116 | 034C116 | Clamp Screw w/Nuts |
| 35 | 035 115 | 035 115 | 035 115 | Click Tongue |
| 36 | 036 115 | 036 115 | 036 117 | Click Button |
| 37 | 037 115 (5 req.) | 037 116 (8 req.) | 037 116 (8 req.) | Frame Post |
| 38 | 039 013 (5 req.) | 039 013 (8 req.) | 039 013 (8 req.) | Right Side Post Screw |
| 39 | 039 012 (5 req.) | 039 013 (8 req.) | 039 013 (8 req.) | Left Side Post Screw |
| 40 | 040 114H | 026 116 | 026 116 | Left Side Bearing |
| 54 | 054 114 (4 req.) | 054 114 (2 req.) | 054 117 (6 req.) | Harness Lug |
| 54A | | 054 116 (2 req.) | | Harness Lug |
| 56 | 056 116 | 056 116 | 056 117 (2 req.) | Rod Brace |
| 56C | 056C115 | 056C116 | 056C117 (2 req.) | Rod Brace (Complete) |
| 69 | 069B600 | | | Retaining Ring |
| 98 | 098 114 | 098 116 | 098 117 | Gear Sleeve |
| 99 | 099 115 (2 req.) | 099 116 (2 req.) | 099 116 (4 req.) | Hook Screw L.H. Thread |
| 140 | 140 115 | 140 115 | | Felt Washer |
| 149 | 149 200 (2 req.) | 149 116L (2 req.) | 149 116L (2 req.) | Hex Nut |
| 149A | 149 045 (2 req.) | 149 116H (2req.) | 149 116H (2req.) | Clamp Nut |
| 155 | 155 115 (2 req.) | 155 116 (4 req.) | 155 116 (4 req.) | Turnbuckle |
| 165 | 165 115 (2 req.) | 165 116 (2 req.) | 165 116 (4 req.) | Hook Screw R.H. Thread |

*Not Shown